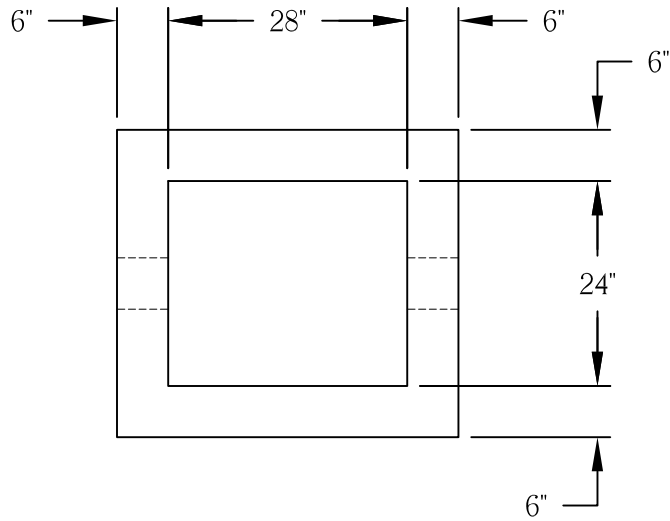
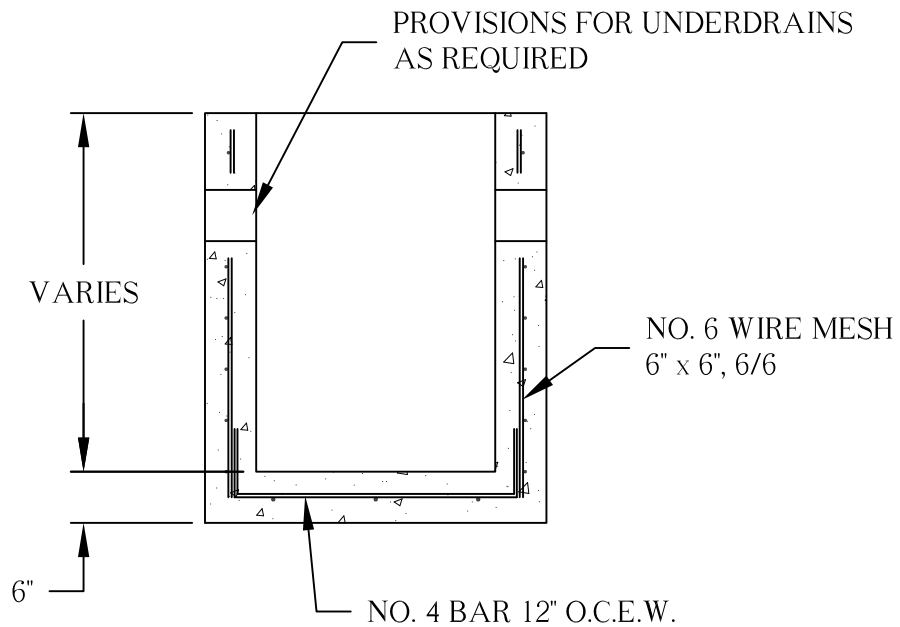


MOUNTABLE CURB & GUTTER INLET



TOP VIEW



SECTION VIEW

NOTES:

1. Concrete 4,000 P.S.I. at 28 days minimum.
2. Cast iron is optional.
3. Steps are M.A. Industries polypropylene, on 12" centers.
4. Holes for pipe are 2" larger than pipe O.D.
5. Conforms to City of Columbus standard construction drawing AA-S125.