

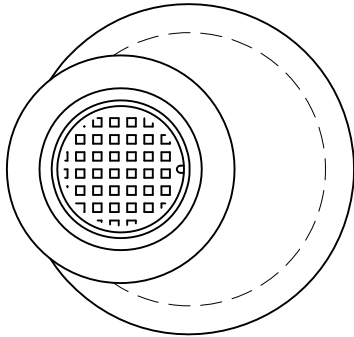


7415 Diley Road  
Canal Winchester, OH 43110

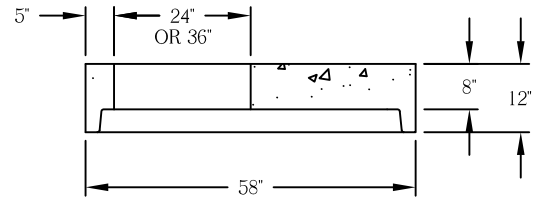
Phone (614) 837-8444  
Toll Free (800) 438-2880  
Fax (614) 837-1198

## 48" I.D. MANHOLE COMPONENTS

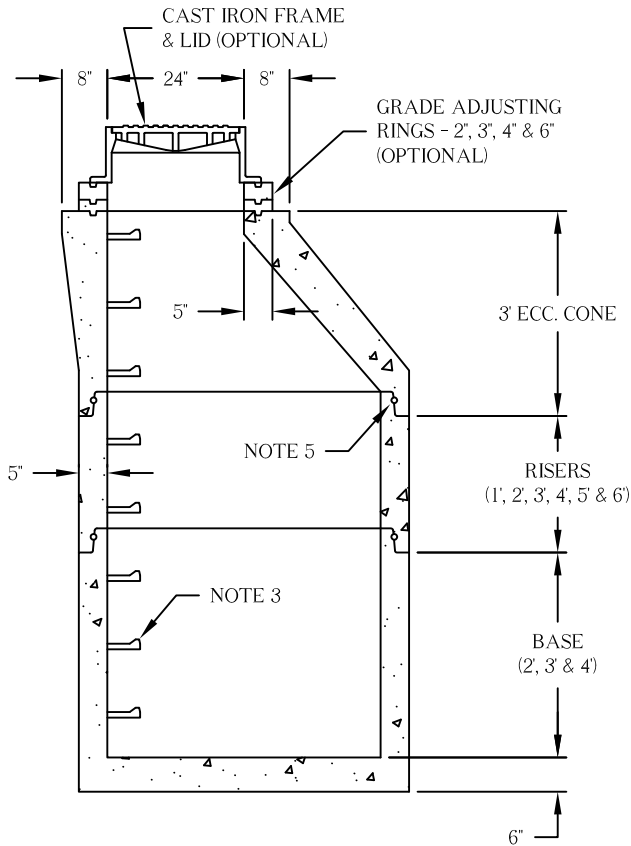
On Target for Quality Precast Concrete Products and Waste Water Treatment Systems



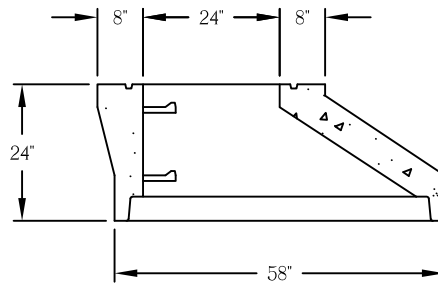
PLAN VIEW



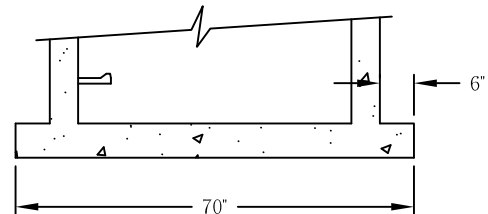
FLAT SLAB TOP



SECTION VIEW



2' ECCENTRIC CONE



ALTERNATE EXTENDED BASE

**NOTES:**

1. Concrete 4,500 P.S.I. at 28 days minimum.
2. Conforms to ASTM C-478.
3. Steps are M.A. Industries polypropylene (or equal), on 12" centers.
4. Precast flow channels are available.
5. O-ring joint meets ASTM C-443.
6. Manhole design conforms to City of Columbus standard construction drawings AA-S100, 101, 102 & ODOT MH-3.
7. Oversized holes for pipe on storm or gaskets for sanitary.