

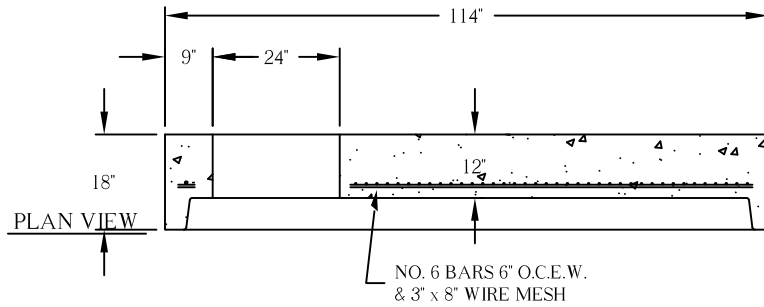
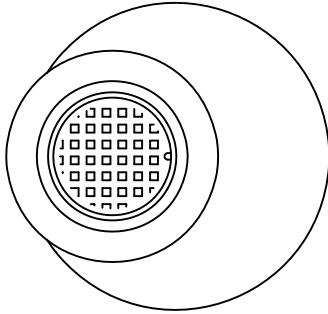


7415 Diley Road
Canal Winchester, OH 43110

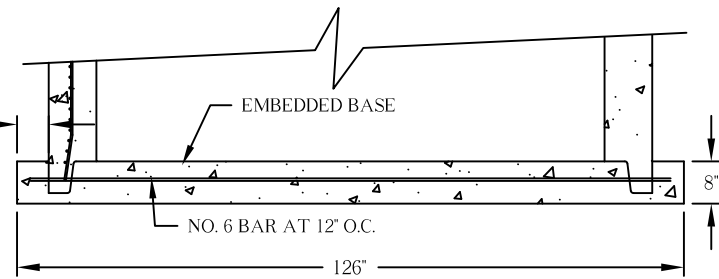
Phone (614) 837-8444
Toll Free (800) 438-2880
Fax (614) 837-1198

96" I.D. MANHOLE COMPONENTS

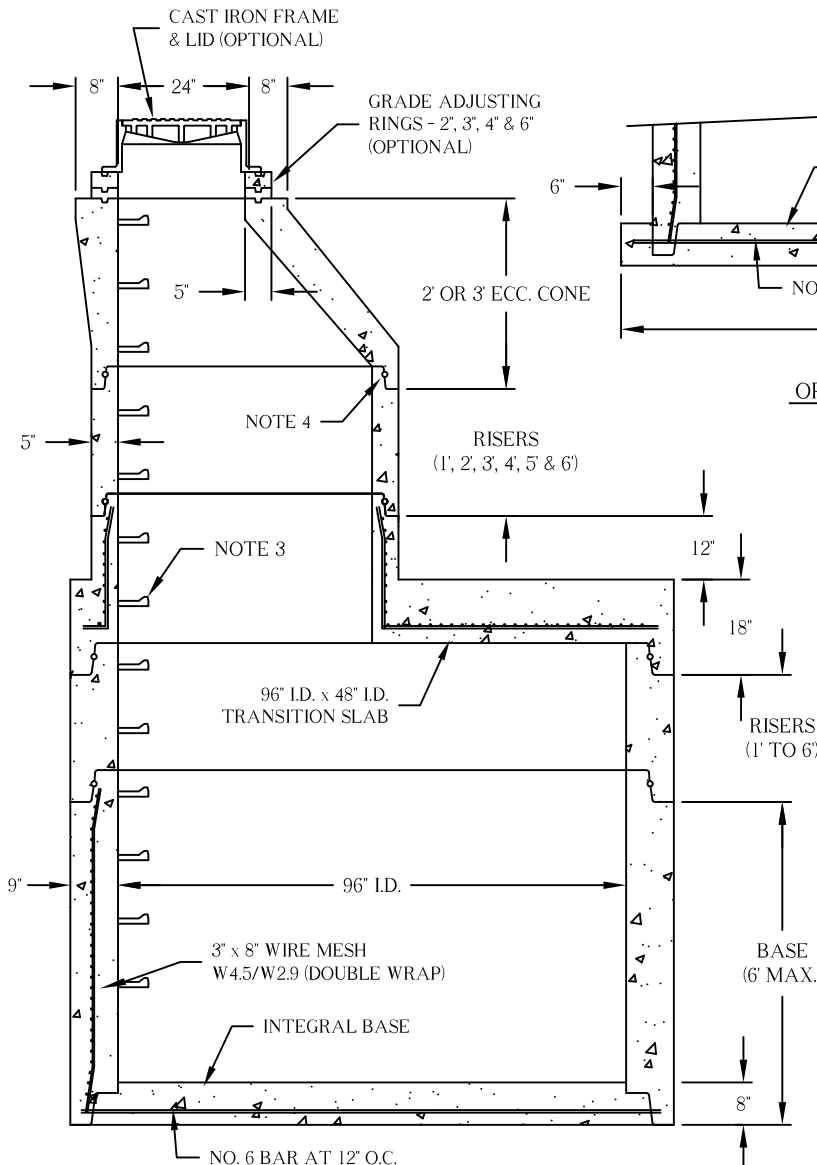
On Target for Quality Precast Concrete Products and Waste Water Treatment Systems



FLAT SLAB TOP



OPTIONAL EMBEDDED BASE



SECTION VIEW

NOTES:

1. Concrete 4,500 P.S.I. at 28 days minimum.
2. Conforms to ASTM C-478.
3. Steps are M.A. Industries polypropylene (or equal), 12" on center.
4. O-ring joints meets ASTM C-443.
5. Manhole design conforms to City of Columbus std. construction drawings AA-S101, 106, 107 & ODOT MH-3.
6. Oversized holes for pipe on storm or gaskets for sanitary.